



Sage Fixed Assets

Single User Installation Guide

Last updated 10/7/2021

This is a publication of Sage Software, Inc.

© 2021 The Sage Group plc or its licensors. All rights reserved. Sage, Sage logos, and Sage product and service names mentioned herein are the trademarks of The Sage Group plc or its licensors. All other trademarks are the property of their respective owners.

Contents

Contents are now available from the Bookmarks panel, which you can access quickly from anywhere in this PDF. Bookmarks are displayed automatically when you open the PDF from a download location on your computer.

If you are viewing this guide in a web browser, you might need to turn on the bookmarks from the toolbar in the PDF, depending on your browser. (For example, in Microsoft Edge, hover over the top of the page to display the toolbar, and then click the Table of contents icon in the top left corner. In the Chrome browser, you would click the Bookmarks icon in the top right corner.)

1 Introduction

This guide contains information that will get your application up and running as quickly as possible. It includes information about installing for the first time, as well as upgrading from a previous version of the product.

After installation, your computer will have the following Sage Fixed Assets programs:

- Depreciation
- Tracking
- Planning

System Requirements

Before installing Sage Fixed Assets, review the System Requirements: Sage Fixed Assets Single User article in the [Sage Knowledgebase](#) for the latest system requirements. The requirements listed are the minimum requirements. As is true of most software programs, enhancing your hardware and system software may improve performance.

Security Requirements

The person installing the program must have Administrative rights to the local computer.

Contacting Us

Within Sage Fixed Assets, select **Help > Sage Support** to display a list of support options. Click to access the product Knowledgebase, find product downloads and updates, start a live chat session, or to submit a support ticket. Sage Support contact number: 800-331-8514.

2 Installing Sage Fixed Assets

Overview of the Install Process

The install process consists of the following steps:

[Step 1: Installing the Latest Version](#), on page 2.

[Step 2: Registering the Application](#), on page 6.

[Step 3: Starting the Application](#), on page 9.

If you are currently using Sage Fixed Assets, please see [Chapter 3, “Upgrading Sage Fixed Assets”](#) on page 10.

Step 1: Installing the Latest Version

Before you begin to install the application, you should do the following:

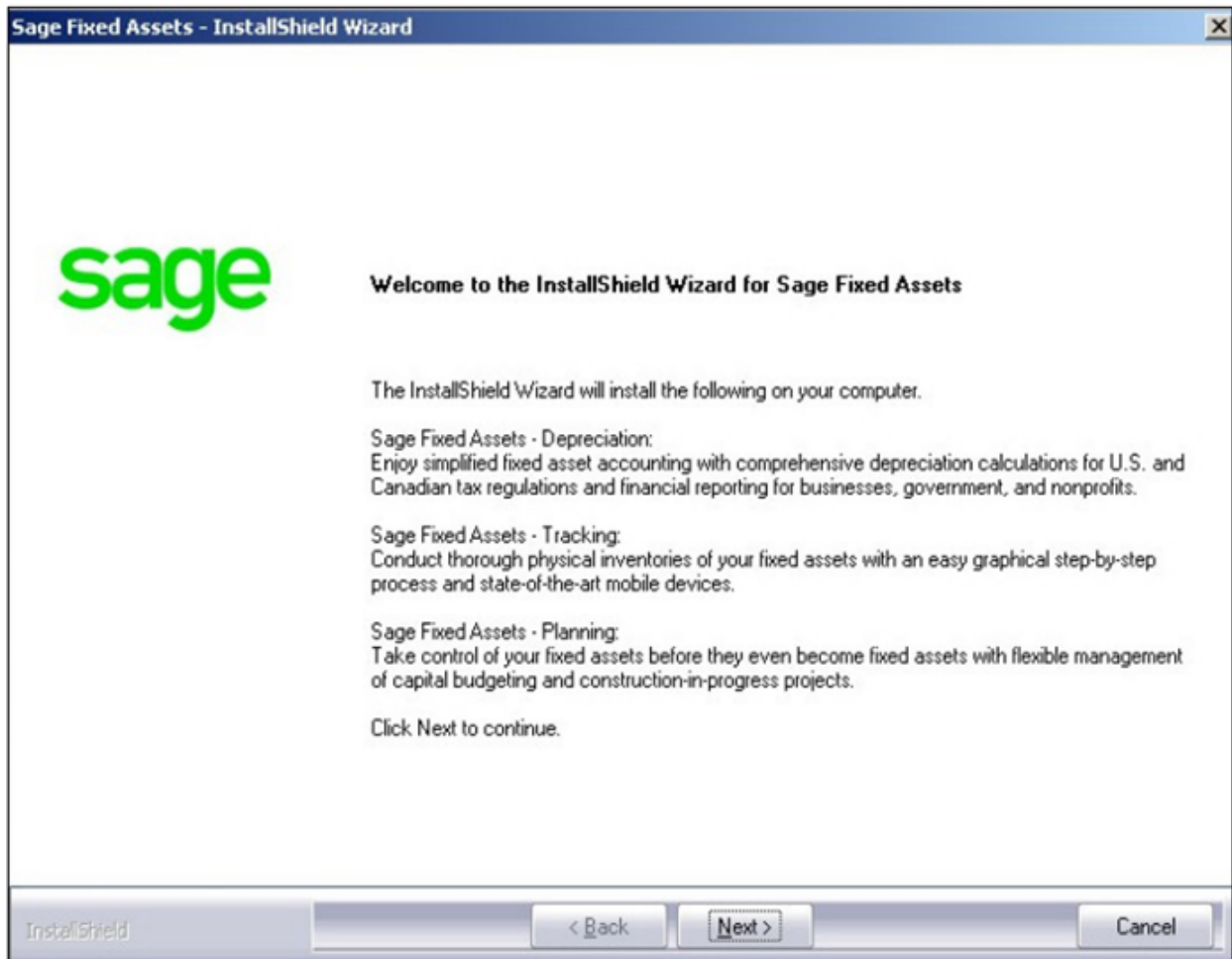
- Close all other Windows programs.
- Close all tool bars on your computer’s desktop (such as the Microsoft Office tool bar).
- Close all programs that run in the background after you start your computer (such as virus-checking programs).
- Make sure you have at least local **Administrator** rights on the computer.

When installing the application, we recommend you accept the default options and directory locations the installation program provides.

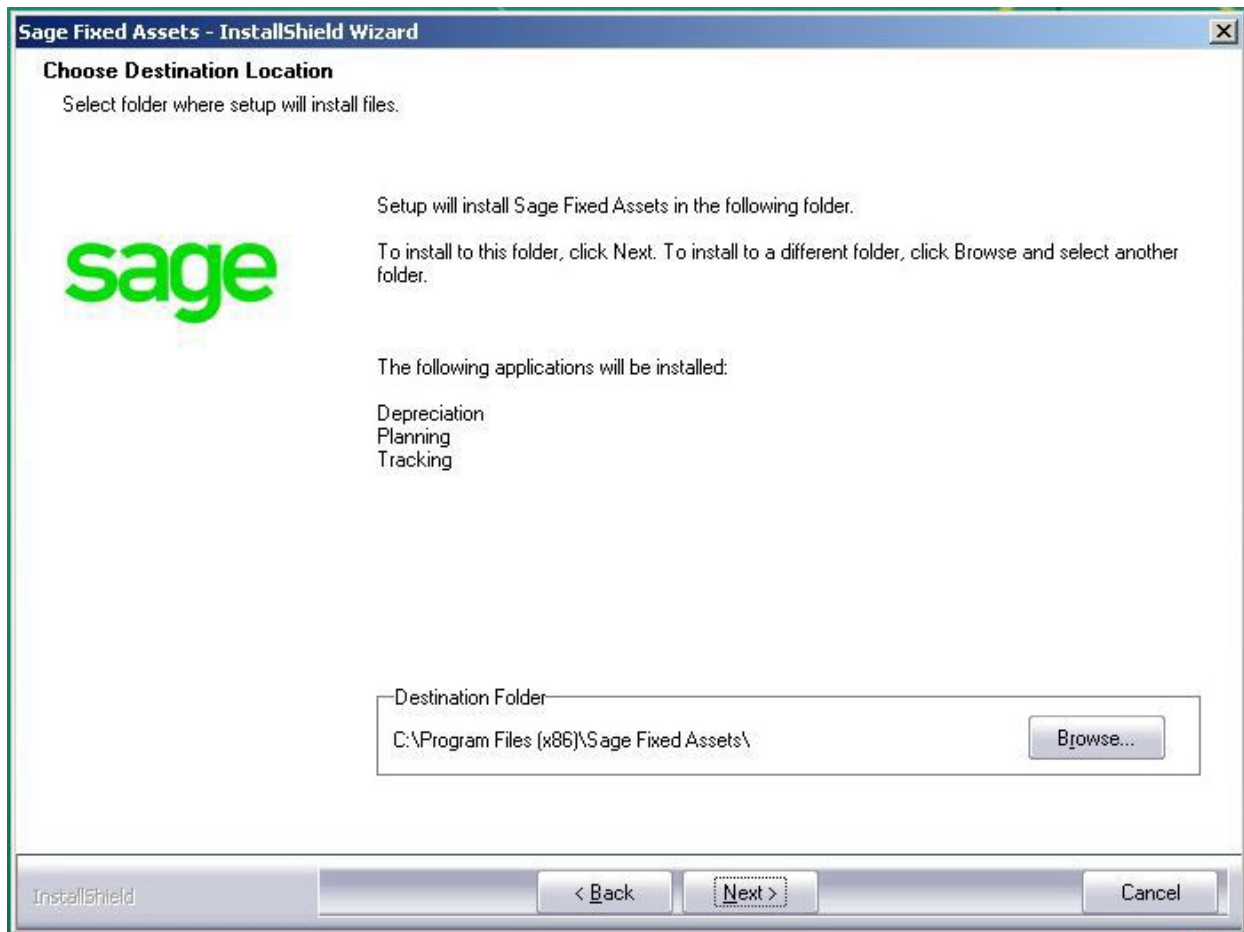
To start the install program

1. Sign in to [Sage Support](#).
2. Click **My downloads** in the top right-hand corner of the page.
3. Under **Latest products**, click the link for the latest version of the program.
4. Click the **Run** button when prompted to either Run or Save the file. The system displays the **Sage Download Manager** dialog.

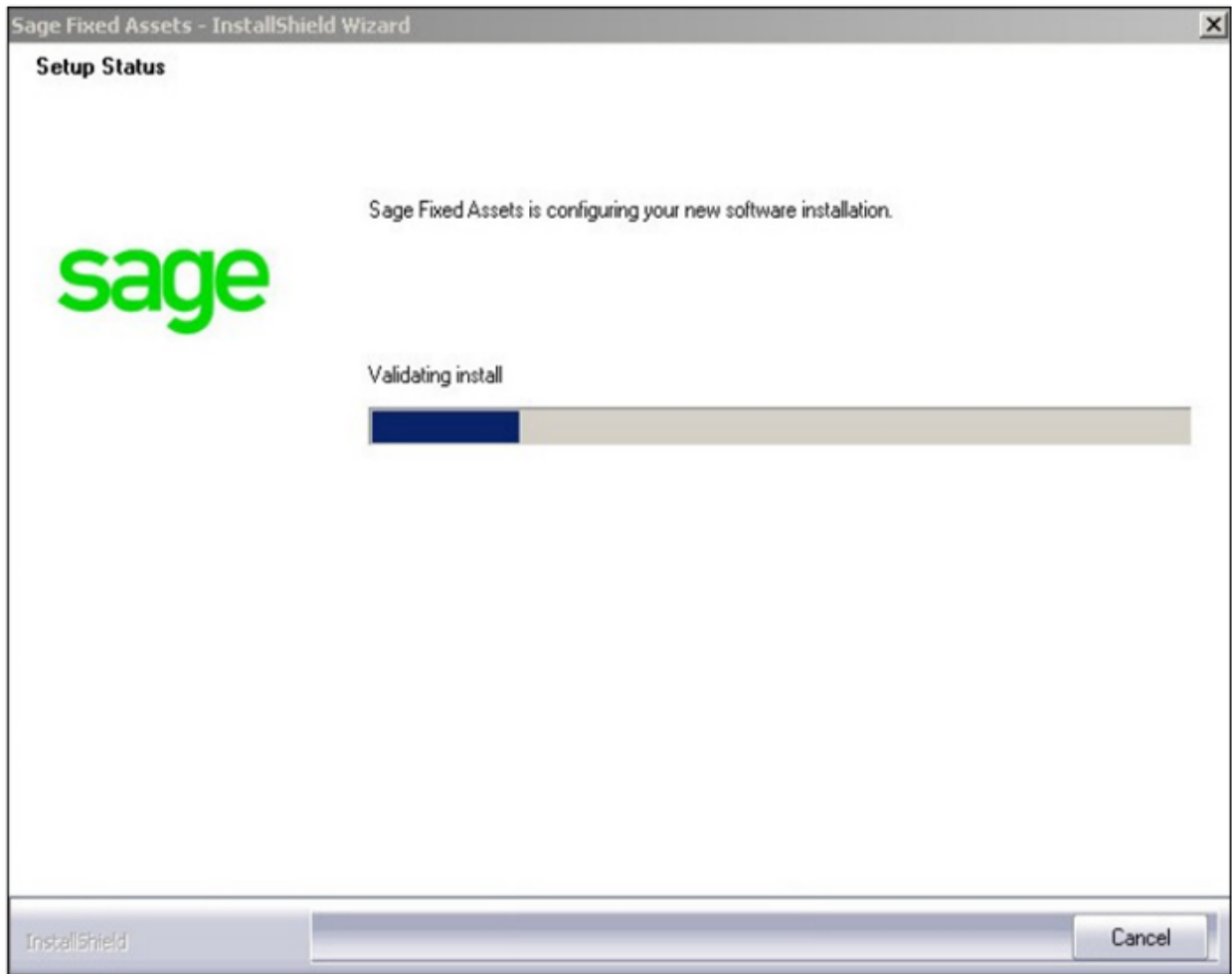
5. Click **OK**. The system begins to download the file. The system prompts you to install Sage Advisor Update, Sage SBDDesktop, Microsoft .NET Framework, and Microsoft Visual C++ 2015 Redistributable if it is not already installed.
6. Click the **Install** button. The system installs the required components, and then displays the **Welcome** dialog. (You may need to restart your machine.)



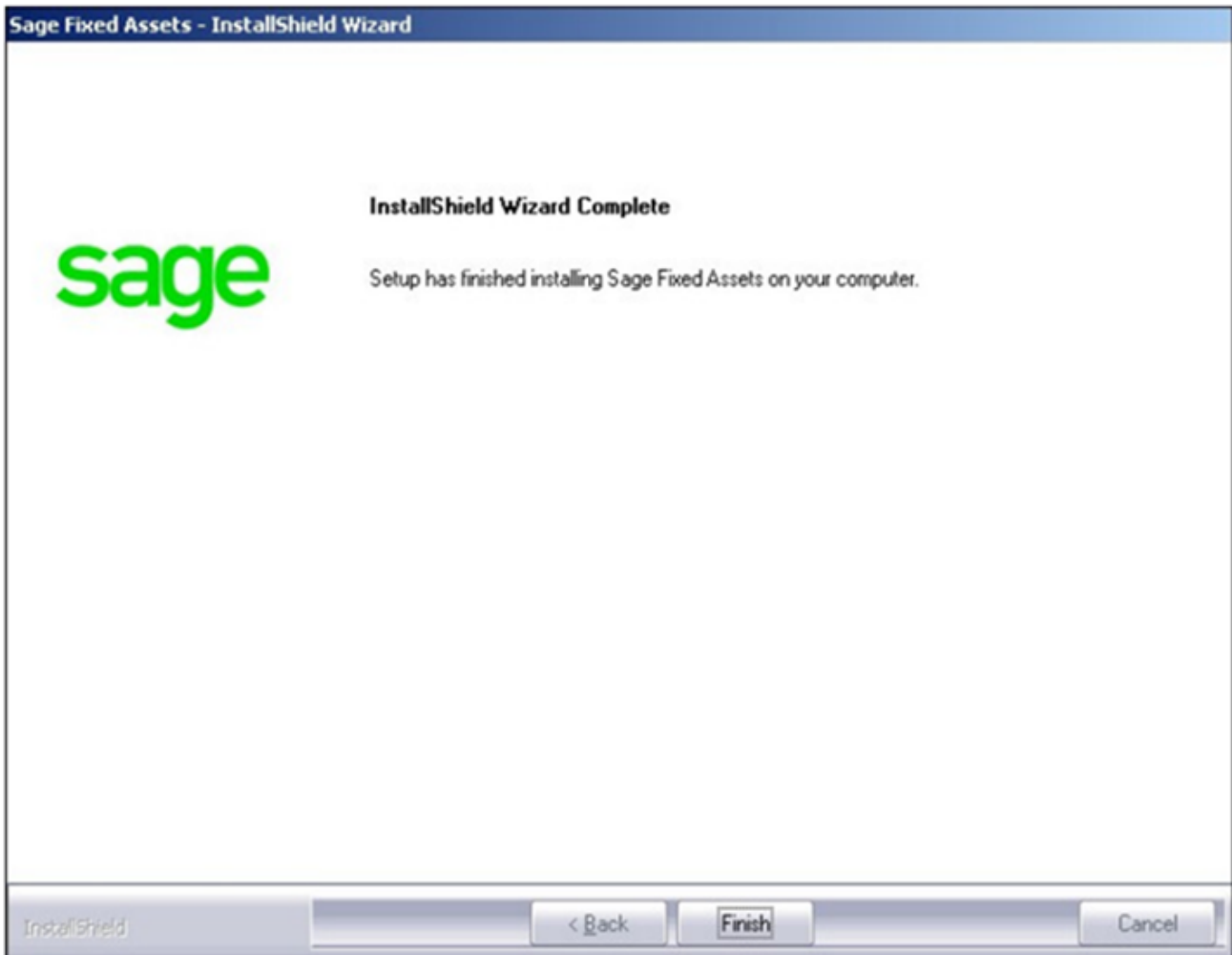
7. Click the **Next** button. The **Software License Agreement** dialog appears. Read the license agreement, and then click the **Yes** button to accept the terms of the agreement. (If you do not accept the terms of the license agreement, click the **No** button. The system exits from the installation program.)
8. After you click the **Yes** button, the **Choose Destination Location** dialog appears.



9. Click the **Next** button. The system begins installing the software, and the **Setup Status** dialog appears.



When all of the files have been installed, the **InstallShield Wizard Complete** dialog appears.



If the installation program determines that you need to restart your computer before you use the program, it displays two options on the **InstallShield Wizard Complete** dialog. You can either allow the system to restart your computer immediately, or you can restart your computer at a later time.

Tip: We recommend that you allow the system to restart your computer at this time if prompted to do so.

10. Click the **Finish** button. The system returns to the Sage Fixed Assets installation dialog.

Step 2: Registering the Application

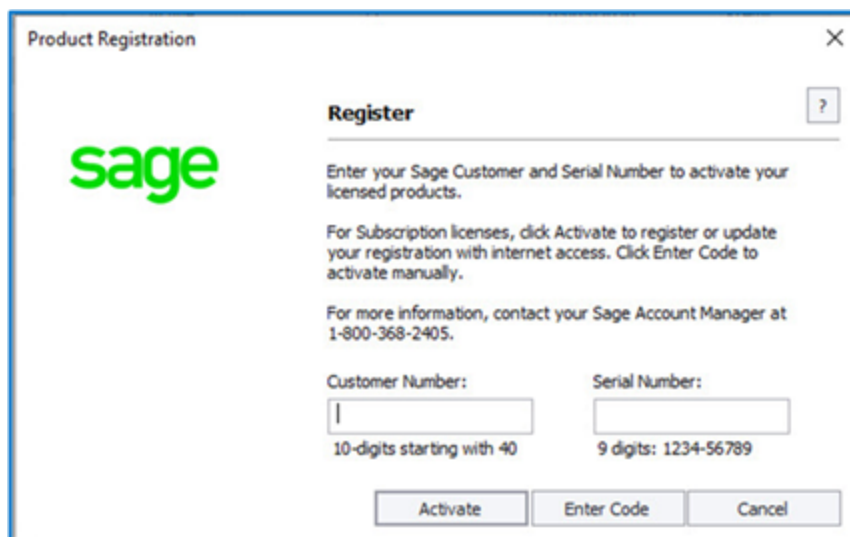
Registering your application provides the following benefits:

- Simplifies the activation of your product which must be done before use.
- Automatically updates subscriptions, eliminating the need to manually enter registration codes.
- Provides immediate access to newly ordered products.

Note: Sage recommends activating and registering your product within 30 days from the order date.

To register the application

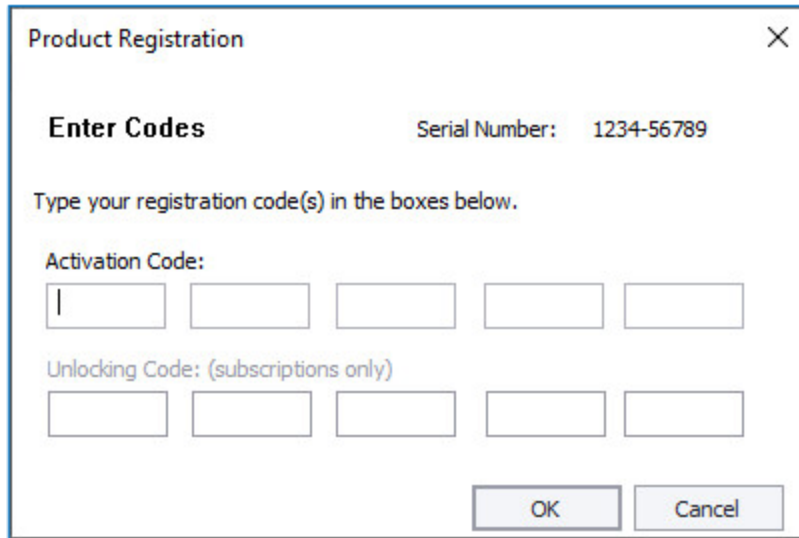
1. Launch Sage Fixed Assets–Depreciation by doing one of the following:
 - a. Double-click the Depreciation icon from your desktop.
 - b. Click the **Start** button (Windows icon) on the Windows taskbar and select the **Sage Fixed Assets** program group. Select the Depreciation icon.
2. The product launches and a message appears indicating you have a 30-day Free Trial.
3. Click the **Register Now** button. The **Register** dialog opens.



The screenshot shows a dialog box titled "Product Registration" with a close button (X) in the top right corner. On the left side, there is the Sage logo. The main heading is "Register" with a help icon (?) to its right. Below the heading, there is instructional text: "Enter your Sage Customer and Serial Number to activate your licensed products." followed by "For Subscription licenses, click Activate to register or update your registration with internet access. Click Enter Code to activate manually." and "For more information, contact your Sage Account Manager at 1-800-368-2405." There are two input fields: "Customer Number:" with a note "10-digits starting with 40" and "Serial Number:" with a note "9 digits: 1234-56789". At the bottom, there are three buttons: "Activate", "Enter Code", and "Cancel".

4. Enter your customer number in the **Customer Number** field and serial number in the **Serial Number** field.
5. To automatically register your product [internet connection required], click the **Activate** button. A Registration Succeeded message displays after a few moments.
6. To manually register your product, click **Enter Code** to manually register your product by entering your **Activation Code** and **Unlocking Code** (subscription only) using the Enter Codes dialog. Click OK.

Note: If you are a subscription customer, the Unlocking Code field will become enabled after entering your Activation Code.



The image shows a 'Product Registration' dialog box with a close button (X) in the top right corner. The title is 'Product Registration'. Below the title, it says 'Enter Codes' and 'Serial Number: 1234-56789'. A instruction reads 'Type your registration code(s) in the boxes below.' There are two rows of input boxes. The first row is labeled 'Activation Code:' and has five boxes. The second row is labeled 'Unlocking Code: (subscriptions only)' and has five boxes. At the bottom right, there are two buttons: 'OK' and 'Cancel'.

7. The Registration Status dialogs displays showing your registration.
 - a. Subscription customers will see a status of “Subscribed” and the subscription expiration date at the bottom right-hand corner.
 - b. All other customers will see a status of “Purchased”.
8. Click **Close**.
9. Complete the **Update User Information** form. Click **OK**.

Note: If you cannot find your Customer Number, Serial Number, Activation Code or Unlocking Code (subscription only), contact your Sage Account Manager at 1-800-368-2405.

Note: These steps will register Depreciation & Tracking. If you also purchased a license to Sage Fixed Assets–Planning, in step 1 select the Planning icon instead and follow the remaining steps.

Using an Expired Subscription

If your subscription expires, a message displays when you open your product indicating that you have a 30-day grace period to continue to use all features in the program. After 30 days, the 120-day read-only period begins. For up to 120 days, you can continue to use these features: *Open Company*, *Custom Export*, *Excel Export*, *Open/Print Reports*, and *Print Asset List*. If you exceed the 120-day read-only period, a message displays when you open your product. Click **Renew Now** to open the Registration Status window, then click the **Register** button. Follow the steps in “To register the application” above to complete your registration.

Step 3: Starting the Application

Starting a licensed version:

1. Launch a Sage Fixed Assets product by doing one of the following:
 - a. Double-click the product icon from your desktop.
 - b. Click the **Start** button (Windows icon) on the Windows taskbar and select the **Sage Fixed Assets** program group. Select the icon for the desired product.
2. The system opens the application and displays the main window.

Starting the free trial version:

1. Launch a Sage Fixed Assets product by doing one of the following:
 - a. Double-click the product icon from your desktop.
 - b. Click the **Start** button (Windows icon) on the Windows taskbar and select the **Sage Fixed Assets** program group. Select the icon for the desired product.
2. A message appears indicating you have 30 days to try the program.
3. Click the **Continue** button.
4. The system opens the application and displays the main window.

Finding your customer number

Your customer number is available in several places:

- In the email from Sage confirming your Sage Fixed Assets order.
- On the invoice for your Sage Fixed Assets order.
- On the Register Window (**Help > Registration > Register**) if you have previously registered.
- From your Sage Account Manager at 800-368-2405.

After you have registered your product, your customer number can also be found at **Help > Update User Information**.

You will need your Customer Number when contacting Sage for assistance.

3 Upgrading Sage Fixed Assets

This chapter provides instructions for upgrading from a previous version.

Previous Versions Compatible with the Latest Version

You must be currently using the prior Midyear release or Tax Update release of Sage Fixed Assets to follow the steps in this section. If you are not, install prior releases in sequential order through the compatible version before you upgrade.

Overview of the Upgrade Process

[Step 1: Backing Up Your Data](#) on page 10.

[Step 2: Installing the Latest Version](#) on page 11.

[Step 3: Converting Your Data](#) on page 13.

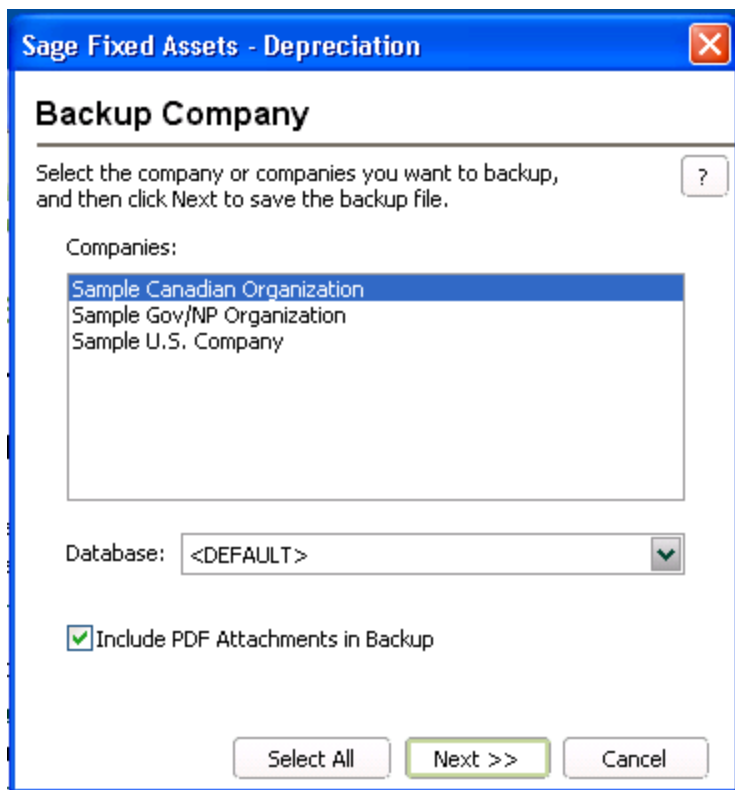
[Step 4: Starting the Application](#) on page 20.

Step 1: Backing Up Your Data

After you install the latest Sage Fixed Assets version, you cannot open your companies in a previous version of the application. You may want to back up your data before you install the latest version, in case you need to go back to a previous version.

To back up your database

1. Select **File > Company Utilities > Backup Company** from the menu bar. The system displays the **Backup Company** dialog.



2. Select the database containing the company or companies you want to back up.

Note: You can repeat these steps and select a different database if you have multiple companies in multiple databases.

3. Select the company or companies that you want to back up.

Note: Click the **Select All** button to select all of the companies listed in the **Companies** field.

4. Click the **Next** button, and designate the destination directory, enter a file name for the backup file, and then click the **Backup** button.
5. After the backup is complete, click the **Cancel** button to close the **Backup Company** dialog, or select another company to back up.

Step 2: Installing the Latest Version

Before you begin to install the application, you should do the following:

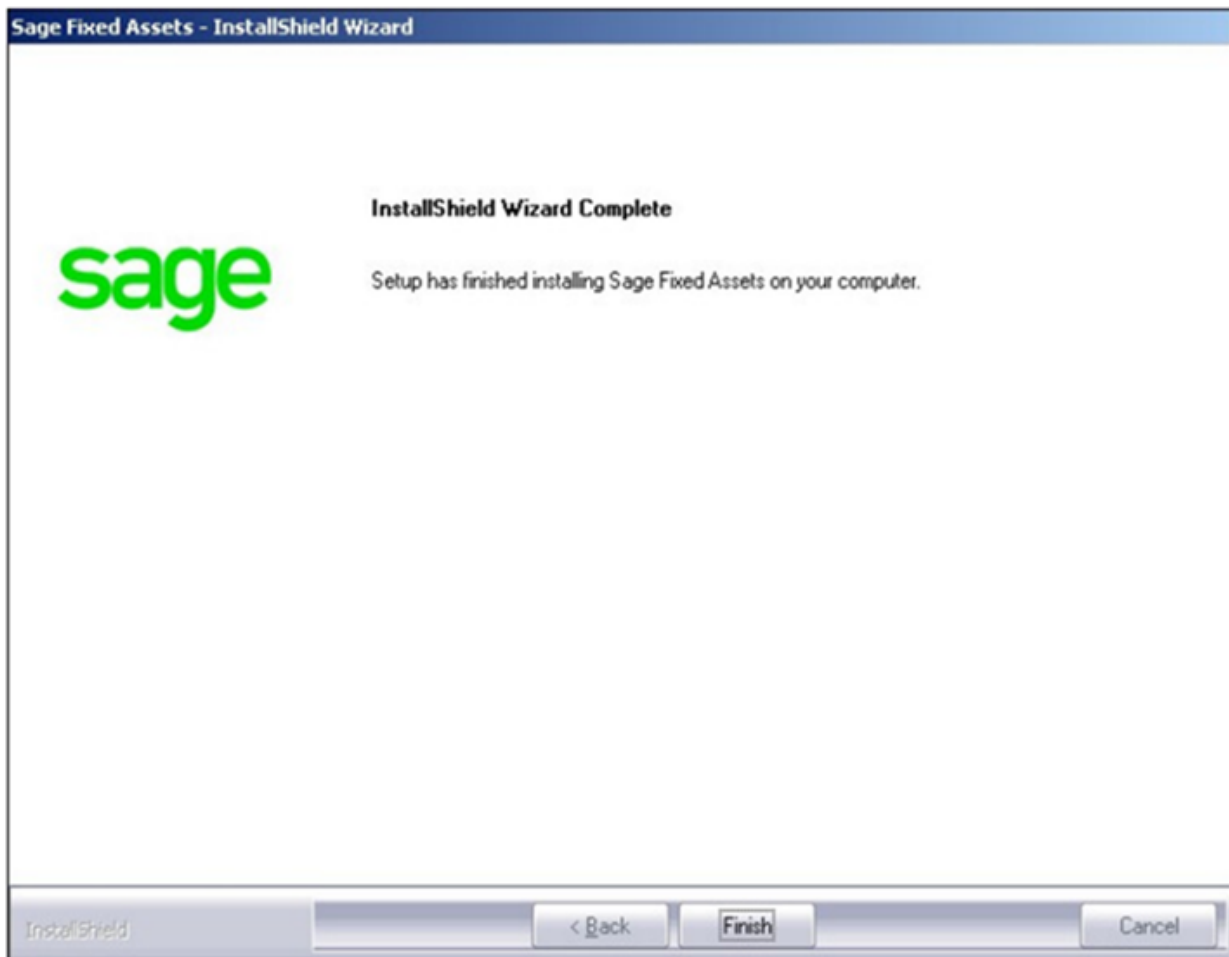
- Close all other Windows programs.
- Close all tool bars on your computer's desktop (such as the Microsoft Office tool bar).

- Close all programs that run in the background after you start your computer (such as virus-checking programs).
- Make sure you have **Local Administrative rights** to the computer.

When installing the application, we recommend you accept the default options and directory locations the installation program provides. However, you can customize the installation to suit your needs by choosing the components you want to install.

To start the install program

1. Sign in to [Sage Support](#).
2. Click **My downloads** in the top right-hand corner of the page.
3. Under **Latest products**, click the link for the latest version of the program.
4. Click the **Run** button when prompted to either **Run** or **Save** the file. The system displays the **Sage Download Manager** dialog.
5. Click **OK**. The system begins to download the file. The system prompts you to install Sage Advisor Update, Sage SBDDesktop, Microsoft .NET Framework, and Microsoft Visual C++ 2015 Redistributable if it is not already installed.
6. Click the **Install** button. The system installs the required components, and then displays the Welcome dialog. (You may need to restart your machine.)
7. Click the **Next** button. The **Software License Agreement** dialog appears. Read the license agreement, and then click the **Yes** button to accept the terms of the agreement. (If you do not accept the terms of the license agreement, click the No button. The system exits from the installation program.)
8. After you click the **Yes** button, a message appears indicating that a previous version of the program has been found on your computer. No asset data will be lost; however, before using the program you may be required to convert your data.
9. Click **Yes** to remove the prior version of the application. The system begins installing the software, and the **Setup Status** dialog appears. When all of the files have been installed, the **InstallShield Wizard Complete** dialog appears.



If the installation program determines that you need to restart your computer before you use the program, it displays two options on the **InstallShield Wizard Complete** dialog. You can either allow the system to restart your computer immediately, or you can restart your computer at a later time.

Tip: We recommend that you allow the system to restart your computer at this time if prompted to do so.

10. Click the **Finish** button. The system returns to the Sage Fixed Assets installation dialog.

Step 3: Converting Your Data

As new features and enhancements are added to the program, the system requires additional information to support the new features. This requires that changes be made to your existing asset database so that the system can store the new information. To update your database, you perform a database conversion.

Note: A database conversion may not be required for the current release. If the program launches and does not prompt you to perform the In-Place Database Conversion, a conversion is not needed for the current database. If it does prompt you for conversion, you can continue and convert the current database, or cancel to use the Database Conversion Utility to convert multiple databases.

If a conversion is needed, you have two options for converting your databases.

- **Database Conversion Utility:** You can use the utility to convert two or more databases at a time. You run the utility from the Sage Fixed Assets program group.
- **In-place Database Conversion:** You perform this type of database conversion when you open a database. You can convert only one database at a time with this type of conversion.

Note: A database conversion requires four times the physical size of the database. Make sure you have enough disk space before you convert your database.

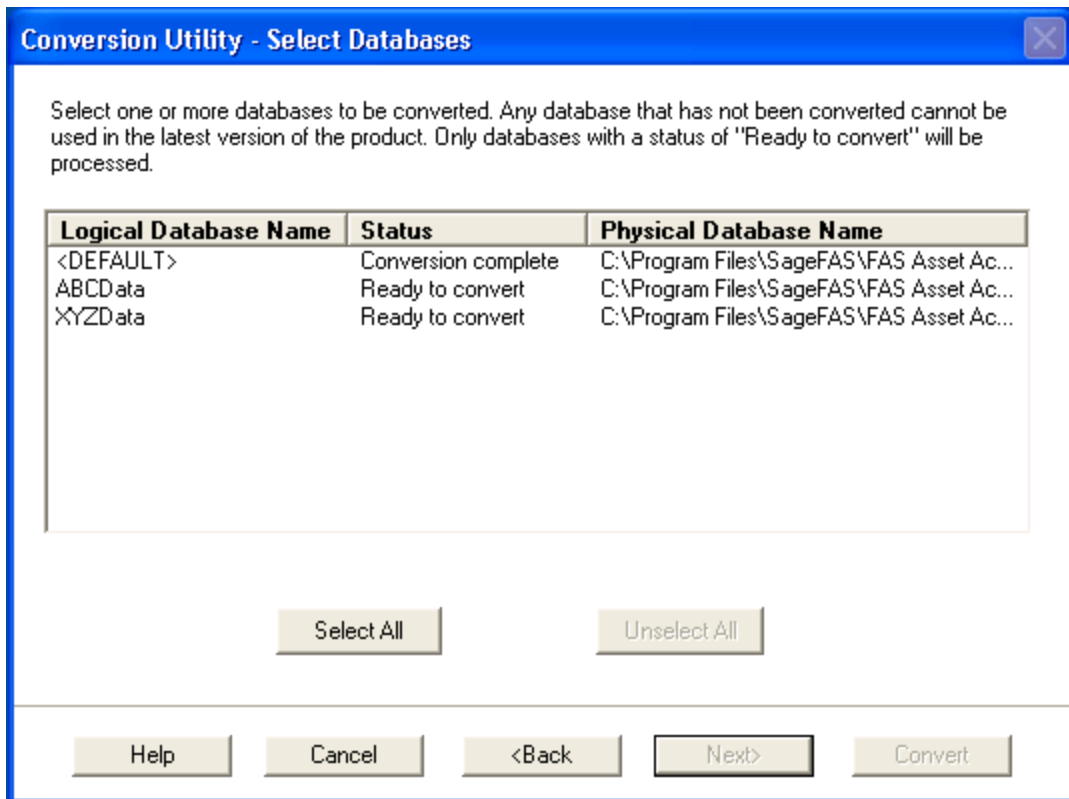
Converting a database is a time-consuming process. Please refer to the table below, which outlines the recommended conversion procedure:

Use the Database Conversion Utility if converting more than one database or more than 3,000 assets.

Number of Databases	Number of Assets	Recommended Conversion Program
1	less than 3,000	In-place Database Conversion
1	3,000 or more	Database Conversion Utility
more than 1	any number	Database Conversion Utility

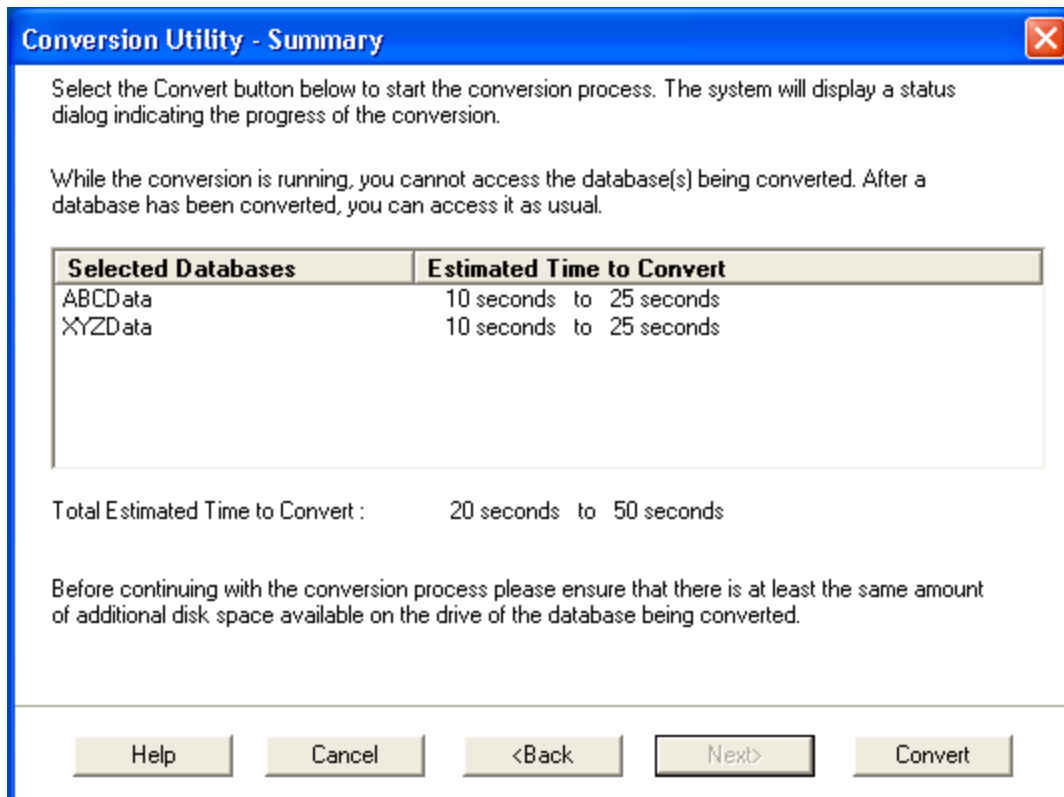
To use the Database Conversion Utility to convert databases

1. Click the **Start** button on the Windows taskbar, and then click **Programs** (or **All Programs**) on the **Start** submenu.
2. Select the Sage Fixed Assets program group.
3. Select the **Tools** program group.
4. Select the Conversion Utility icon.
5. Select the Sage Fixed Assets program containing the database that you want to convert.
6. Click the **Next** button. The **Conversion Utility Welcome** dialog appears.
7. Click the **Next** button. The **Conversion Utility Performance** dialog appears.
8. Review the **Conversion Utility Performance** dialog to estimate how long the database conversion will take.
9. Click the **Next** button. The **Conversion Utility Select Databases** dialog appears.

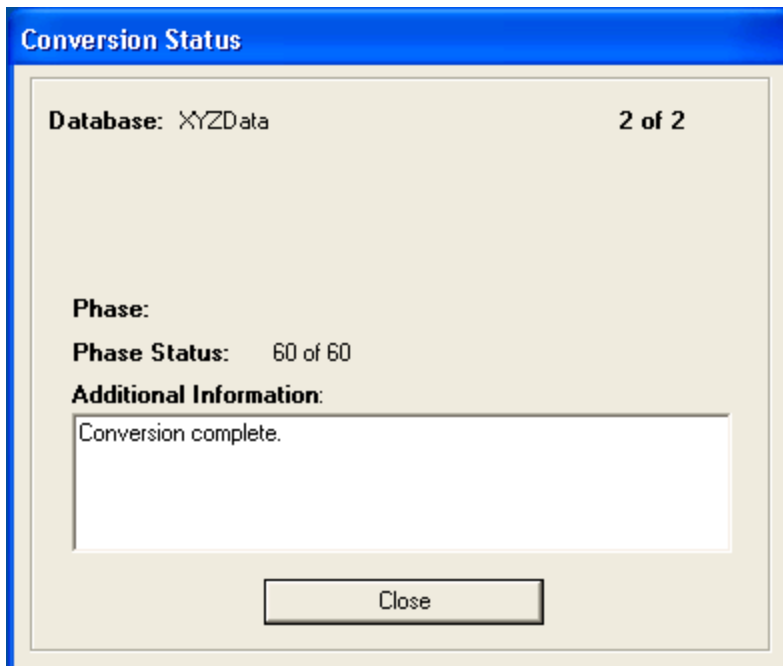


This dialog displays the status of each database.

- **Conversion Complete** This status indicates that the database has already been converted to the latest version.
 - **Ready to Convert** This status indicates that the database is ready to be converted to the latest version.
 - **Incompatible Version** This status indicates that the database cannot be converted because the database version is incompatible with the latest version of the application. For assistance in converting your databases, please contact Sage Fixed Assets Customer Support.
 - **Cannot Open** This status indicates that the database cannot be converted for an unknown reason. The database may have been moved and the system cannot locate it, or the database may be corrupted. For assistance in resolving the problem, please contact Sage Fixed Assets Customer Support.
10. Select the database(s) that you want to convert, and then click the **Next** button. The **Conversion Utility Summary** dialog appears.

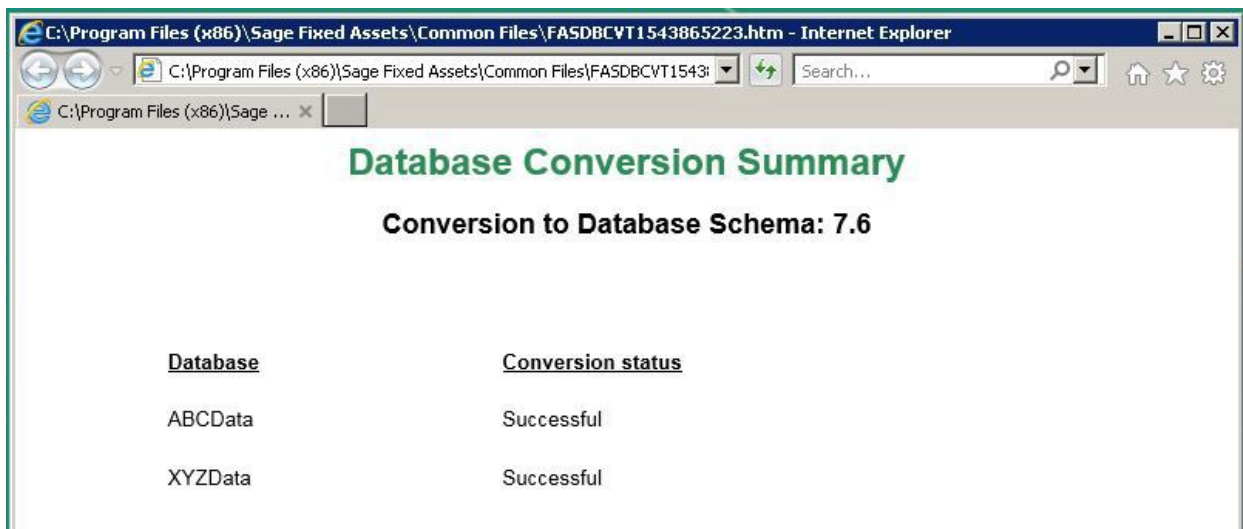


11. Review the **Conversion Utility Summary** dialog, and then click the **Convert** button. The system checks your computer's disk space to make sure there is sufficient space to convert your data. The conversion requires four times the size of each database of disk space for each database being converted. If there is sufficient space for the conversion, it begins to convert the database(s) and displays the **Conversion Status** message box.



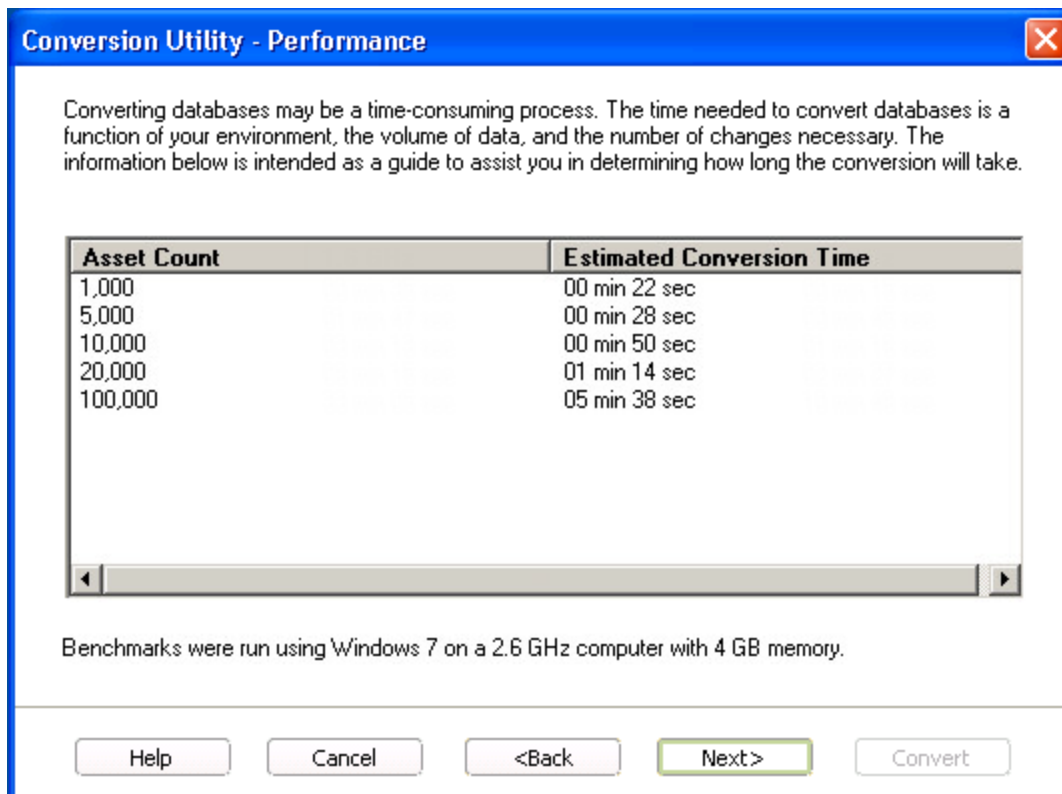
When the conversion is complete, a “Conversion Complete” message appears in the **Additional Information** text box.

12. Click the **Close** button. The system displays the **Database Conversion Summary** report, which indicates whether the conversion was successful for each database.

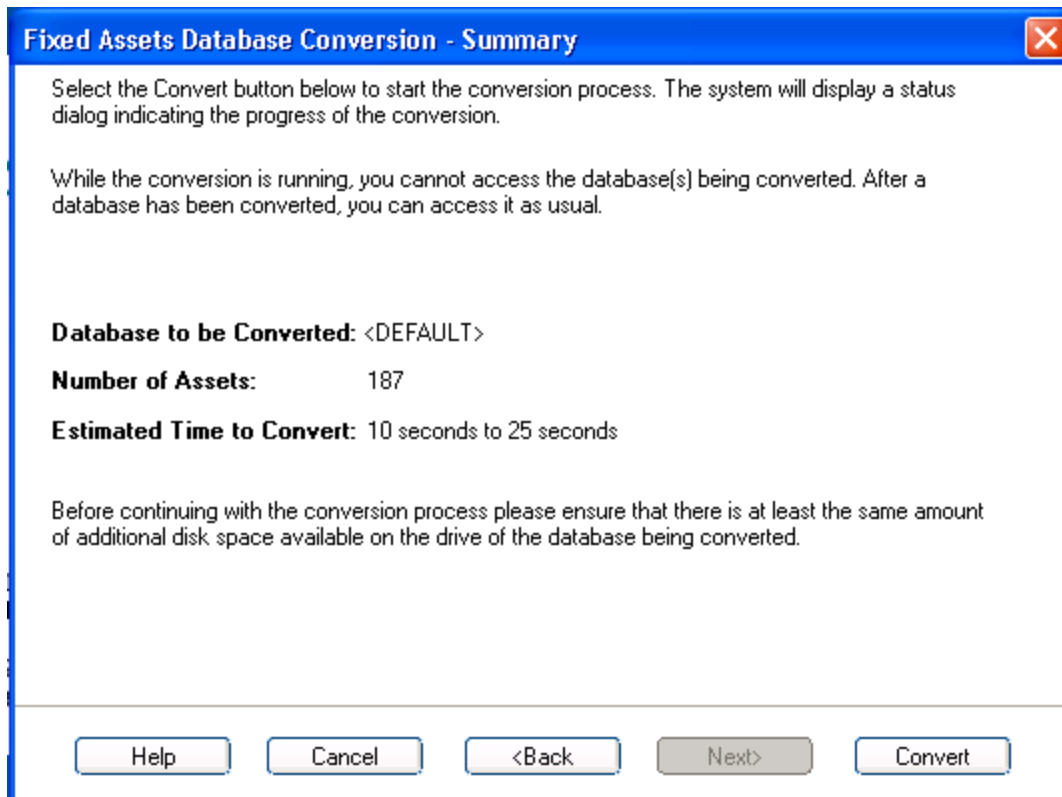


To perform an in-place database conversion

1. Click the **Start** button on the Windows taskbar, and then click **Programs** (or **All Programs**) on the **Start** submenu.
2. Select the **Sage Fixed Assets** program group.
3. Select the Depreciation icon. The application attempts to open a database that must be converted. The **Conversion Utility Welcome** dialog appears.
4. Click the **Next** button. The **Conversion Utility Performance** dialog appears.

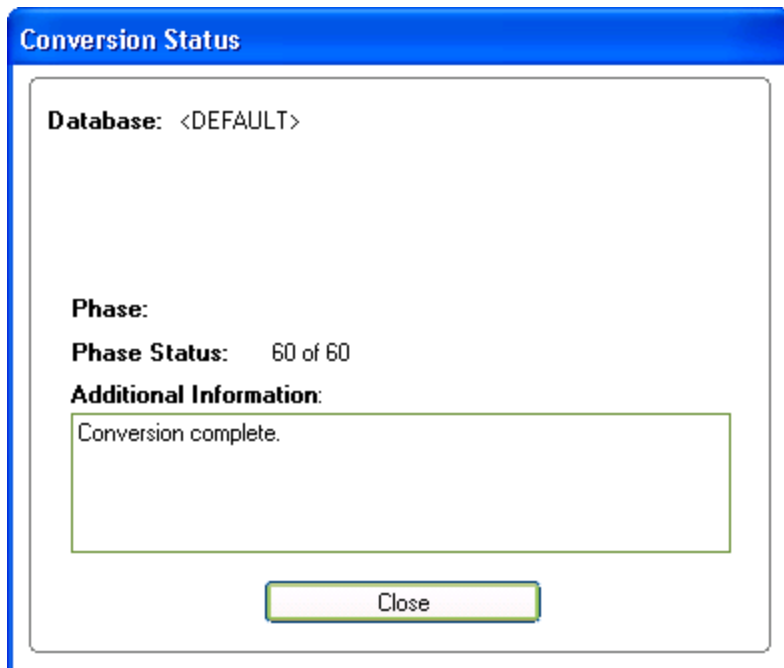


5. Review the **Conversion Utility Performance** dialog to estimate how long the database conversion will take.
6. Click the **Next** button. The **Conversion Utility Summary** dialog appears.



7. Review the **Conversion Utility Summary** dialog, and then click the **Convert** button.

The application checks your computer's disk space to make sure there is sufficient space to convert your data. If there is sufficient space for the conversion, it begins to convert the database(s) and displays the Conversion Status message box.



When the conversion is complete, a “Conversion Complete” message appears in the **Additional Information** text box.

Step 4: Starting the Application

Note: You can start the application by double-clicking the icon on your desktop.

To start the application

1. Launch a Sage Fixed Assets product by doing one of the following:
 - a. Double-click the product icon from your desktop.
 - b. Click the **Start** button (Windows icon) on the Windows taskbar and select the **Sage Fixed Assets** program group. Select the icon for the desired product.
2. The system opens the application and displays the main window.
3. If security is enabled, you must enter your username and password.

Finding your customer number

Your customer number is available in several places:

- In the email from Sage confirming your Sage Fixed Assets order.
- On the invoice for your Sage Fixed Assets order.
- On the Register Window (**Help > Registration > Register**) if you have previously registered.
- From your Sage Account Manager at 800-368-2405.

After you have registered your product, your customer number can also be found at **Help > Update User Information**.

You will need your Customer Number when contacting Sage for assistance.

4 Using a Windows Bar Code Reader

This chapter provides instructions for installing the bar code reader.

Overview of the install process

[Attaching Your Physical Reader](#), on page 22.

[Installing the Barcode Reader Program](#), on page 22.

Attaching Your Physical Reader

In this step, you attach your physical reader to your workstation. The installation program will detect your reader and prompt you to install the Barcode Reader program.

Installing the Barcode Reader Program

To successfully operate physical readers during a Dynamic or Baseline inventory, you must transfer the Barcode Reader program files from your computer to the reader. You must have already installed Microsoft Windows Mobile Device Center on your computer before installing Barcode Reader.

You only need to follow the procedure that downloads the Barcode Reader program to the physical reader once. You will not need to repeat this procedure unless there is an update to the program.

Note: Before installing the Barcode Reader program, you must make sure that Microsoft Windows Mobile Device Center is installed on your computer. You can download it free from the Microsoft website at www.microsoft.com.

The following steps describe how to install the Barcode Reader program during the installation of Sage Fixed Assets Tracking. You can install the Barcode Reader program at any time after you have installed the application by doing the following:

- Attach the physical reader to your computer.
- Right-click the SETUP.EXE file located in the Reader folder where you installed Sage Fixed Assets Tracking and then select Run as administrator. The default location is C:\Program Files\Sage Fixed

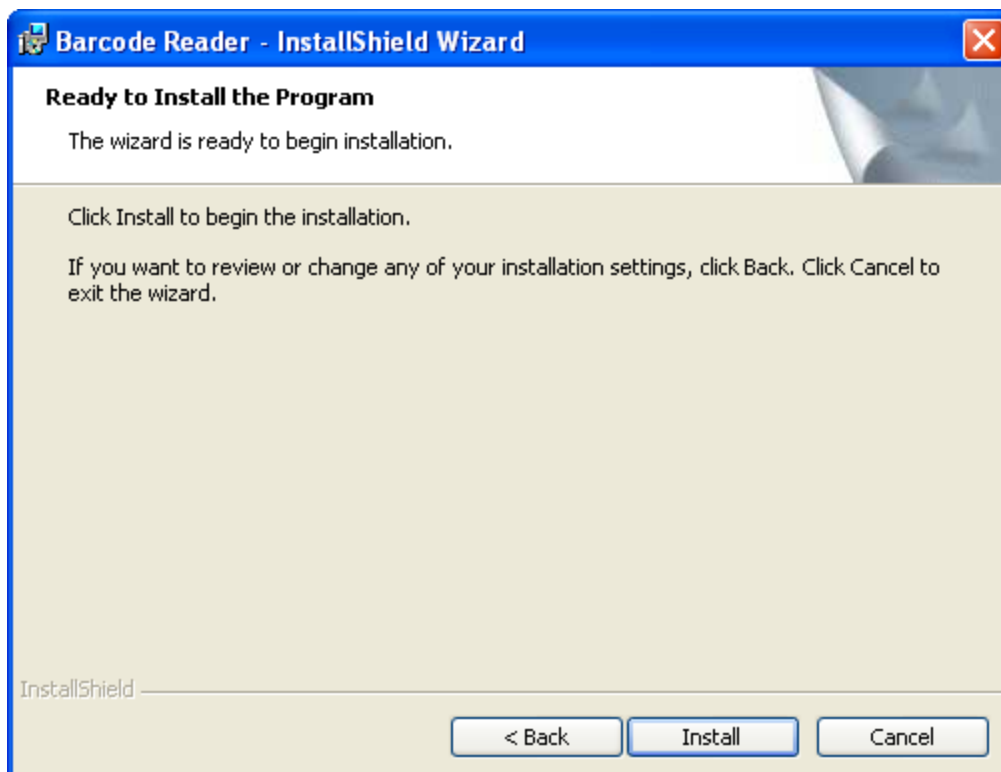
Assets\Reader.

You may need to perform the steps above if you have purchased more than one reader.

To install the Barcode Reader program to the physical reader

1. Before starting the Sage Fixed Assets Tracking installation, make sure your physical reader is connected to your computer and has at least 3 MB of storage memory available. At the end of the Sage Fixed Assets Tracking installation process, the system asks if you would like to install the Barcode Reader program.
2. Click **Yes**. The **Welcome** dialog appears.
3. Click the **Next** button. The **License Agreement** dialog appears.
4. Read the license agreement, accept the terms of the license agreement, and then click the **Next** button. (If you do not accept the terms of the license agreement, click the **Cancel** button and the system exits from the installation program.)

The **Ready to Install the Program** dialog appears.



5. Click the **Install** button. The system displays a dialog that indicates the progress of the installation. When the installation is complete, a message asks you to check your physical device screen for additional steps to complete the installation.

6. Click **OK**. On the physical device, a message allows you to select the location for installing the Barcode Reader program.



7. Click the **Device** option, and then click **Install**. On the physical device, a message confirms the successful installation of the Barcode Reader.



On the computer desktop, the **InstallShield Wizard Completed** dialog appears.

8. Click the **Finish** button.

Note: After installation is complete, it is recommended that you restart the physical reader.

1. Note: Because you are upgrading the device from a previous version of the reader program, you will be required by Windows Mobile Device Center to first remove the old program.

5 Installing Sage Fixed Assets Reporting

Note: The latest version of Sage Fixed Assets Reporting uses SAP® Crystal Reports 2016 (Crystal Reports), which requires 2 GB of hard disk space.

Sage Fixed Assets Reporting enables you to create custom reports. It is a powerful program that allows you to design, create, print, and distribute your custom reports.

Note: Sage Fixed Assets Reporting may not be compatible with other versions of Crystal Reports. Before installing Sage Fixed Assets Reporting, we recommend that you make sure Crystal Reports 2016 is compatible with your other applications that run Crystal Reports.

Installing the Latest Version

Before you begin to install the application, you should do the following:

- Close all other Windows programs.
- Close all tool bars on your computer's desktop (such as the Microsoft Office tool bar).
- Close all programs that run in the background after you start your computer (such as virus-checking programs).
- Make sure you have Administrative rights to the local computer.

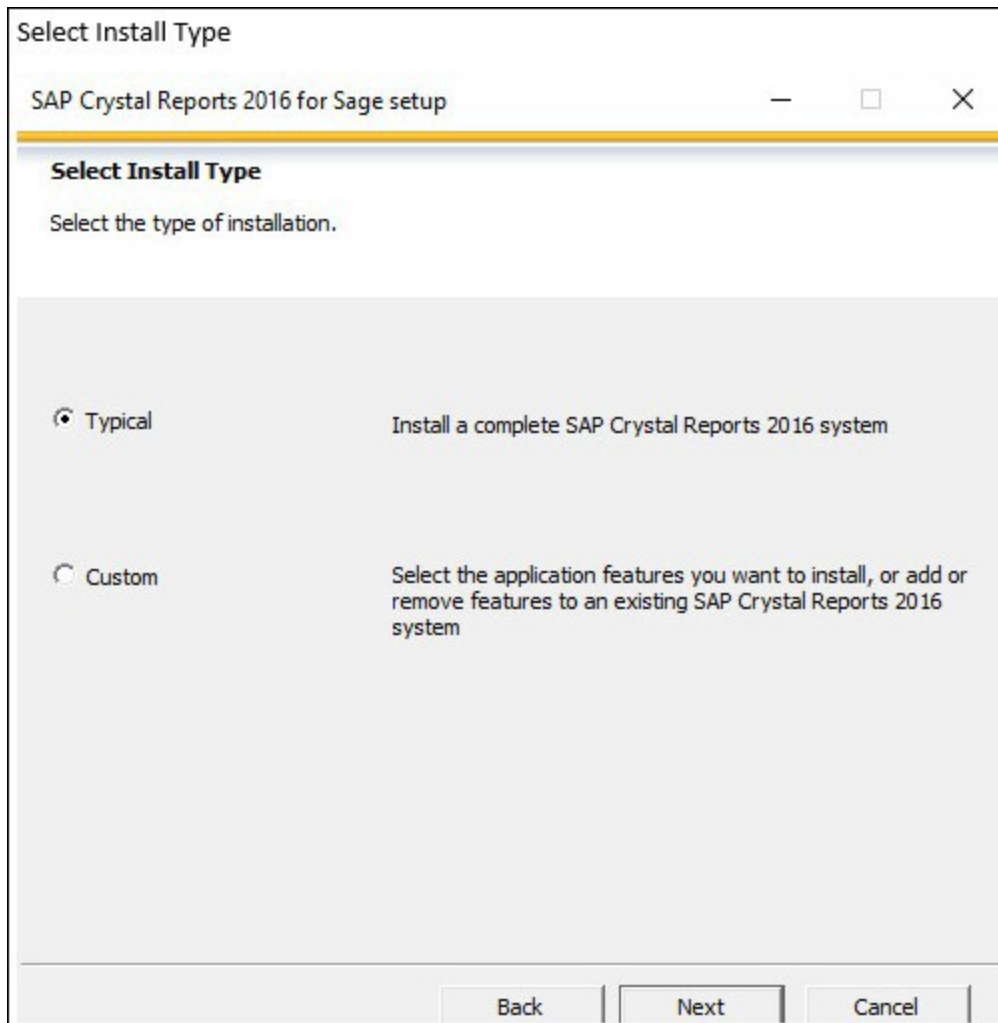
When installing the application, we recommend you accept the default options and directory locations the installation program provides. However, you can customize the installation to suit your needs by choosing the components you want to install.

To start the install program

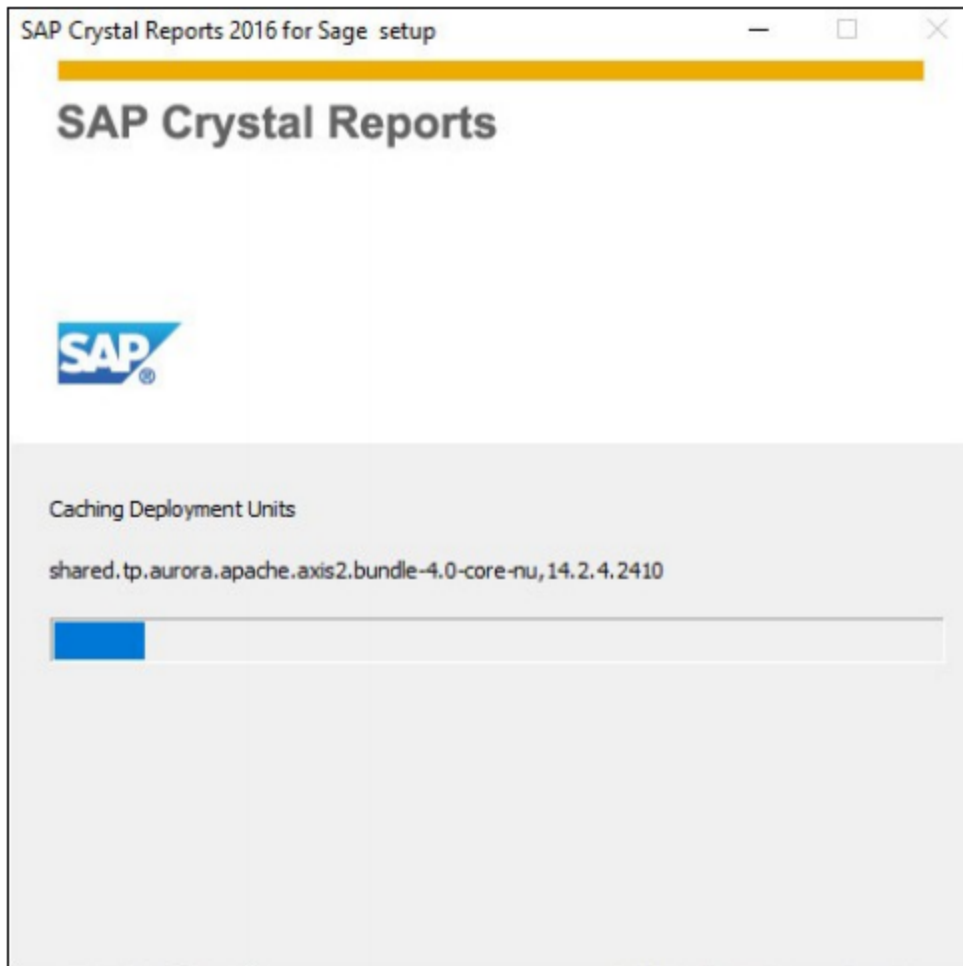
1. Sign in to [Sage Support](#).
2. Click **My downloads** in the top right-hand corner of the page.
3. Under **Latest products**, click the link for the latest version of the program.
4. Click the **Run** button when prompted to either run or save the file. The system displays the **Sage Download Manager** dialog.
5. Click **OK**. The system begins to download the file. The **Welcome** dialog appears.



6. Click the **Next** button. The system displays the **License Agreement**.
7. Select the **I Accept the License Agreement** option and then click the **Next** button. The system displays the **Specify the Destination Folder** dialog.
8. The system displays the **Select Install Type** dialog.



9. Leave the **Typical** option selected, and then click the **Next** button. The system displays the **Start Installation** dialog.
10. Click the **Next** button. The system begins installing the program and displays the installation progress dialog.



11. When the installation is complete, a message indicates the installation has been completed successfully.
12. Clear the **Check for Product Updates** button.
13. Click the **Finish** button.

You are now ready to begin using Sage Fixed Assets application and creating custom reports with Sage Fixed Assets Reporting. For information on using Sage Fixed Assets Reporting, see the [Sage Fixed Assets Reporting User Guide](#).

Appendix Troubleshooting

Moving and Reconfiguring Databases

Due to changes in the Windows 8 and Windows 10 operating systems, you may have to change the location of your Sage Fixed Assets asset databases.

If you have a database located in a virtualized location, you will need to move it to a new location and update the location information in Database List Manager. The virtualization feature occurs in the C:\Windows and C:\Program Files folders.

Warning: DO NOT move the database to a network drive or connect to a database on a network. Doing so will corrupt your database and make it potentially unrecoverable. If you need to keep your database on a network, consider upgrading from single user to the network edition. To learn more about the Sage Fixed Asset Network, please call Sales at 800-368-2405.

To determine if you need to move your databases

1. Open your existing Sage Fixed Assets application and select **File > Database List Manager** from the menu bar.
2. Select each database and review the Database Path information to determine the location of the physical database file.
3. If the database file is located in C:\Program Files\Sage Fixed Assets or any other non-virtualized location outside of My Documents, then close the application. You are ready to install the latest version and operate the program under Windows 8 and Windows 10.
4. If the database is located in a virtualized location (i.e., C:\Windows or C:\Program Files), or a folder within My Documents, you will need to move the database. Close the application and continue with step 5 below.

If databases are in an unsupported Windows 8 or Windows 10 location

For any database located in a virtualized location, use Windows Explorer to move the physical files to a non-virtualized location. We recommend using the Data folder or any other subfolder created under the Sage Fixed Assets installation directory. For any databases previously located in the My Documents folder, you will need to confirm the current location of the physical database file under C:\Users.

5. Open your Sage Fixed Assets application and access **Database List Manager**.
6. Select the database that has been moved to a new location and click the **Configure** button.

7. Click the **Browse** button to locate the newly located database and update the **Physical Database Name** location.
8. Click the **Next** button to move to the second panel of the **Configure** wizard.
9. Click the **Finish** button to return to the **Database List Manager** dialog. Notice that the Database Path information has been updated.
10. Repeat this process for each database that has been moved to a new location.