



DATASHEET

What's New in Sage 300 2022

Get increased flexibility and compatibility needed for today's business.

sage 300



Sage 300 2022 offers users exciting new features that guarantee better user experience, and advanced capabilities and flexibility needed for today's business. The latest version presents additional functionalities and superior user experience through Web Screen Improvements, Desktop Screen Improvements and some Capability Enhancements.

Benefits of Sage 300 2022

Better User Experience



Greater productivity



Less training/retraining



Higher employee satisfaction

Advanced Capabilities & Flexibility



Improve efficiency



Gain better business insight



Less workarounds/
manual processes

What's new in 2022.2

Released April 2022

Project and Job Costing Integration for A/P Payments, A/P Adjustments and A/P Recurring Payments *(For Sage 300cloud only)*

Users can now enter and work with job-related documents on all A/P transaction entry screens. A/P Batch Listing Report now includes a 'Show Job Details' option for Batch Type: Invoice, Payment, and Adjustment. Users can apply payments to projects maintained in Sage 300 Project and Job Costing and allocate partial payments and/or recurring payments to different contracts and projects listed on the invoice.

Vendor tax numbers are now more secure

In Accounts Payable, Tax numbers for 1099 and T5018 Tax Reporting such as SIN (Social Insurance Number - CA) or SSN (Social Security Number - US) are now more secure.

- By default, tax numbers now cannot be entered or changed, and are masked so that only the last four characters in the number are displayed.
- Options for Printing and Electronic Filing for 1099/1096 forms and T5018 (CPRS) are not accessible by default.

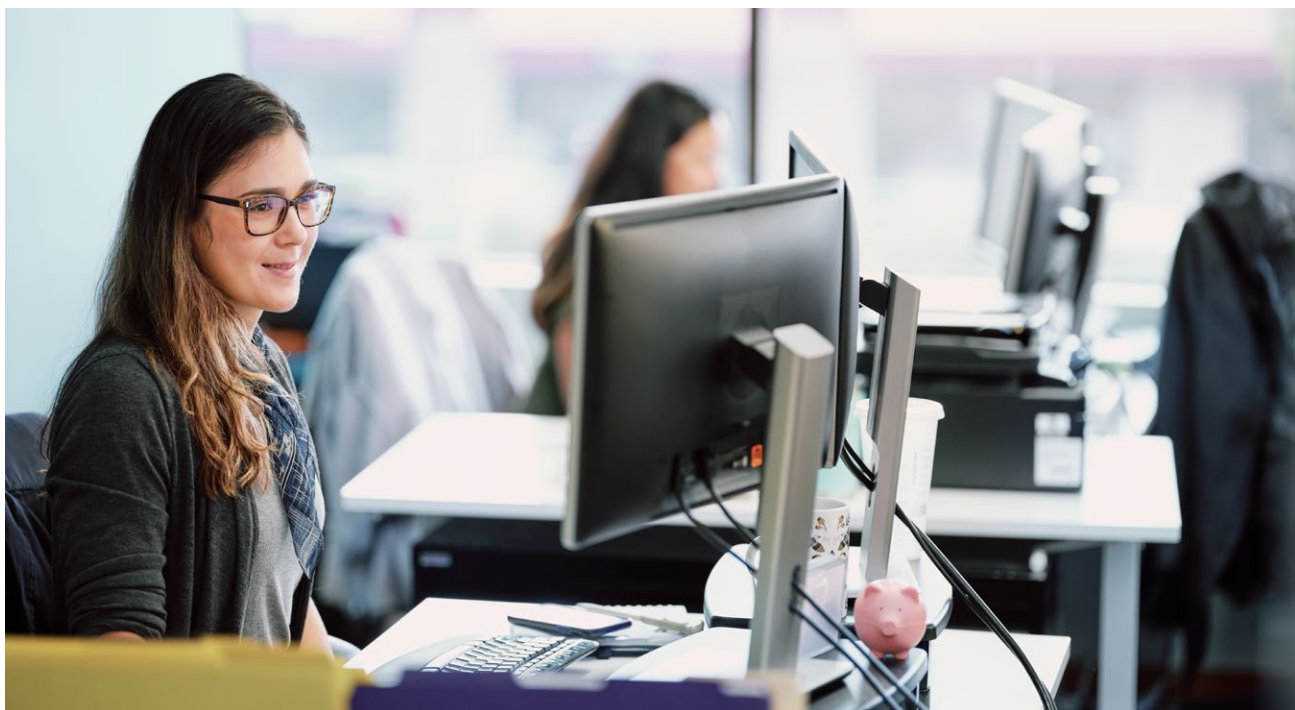
Increased Security

User passwords are now more secure. A new required complexity option requires that passwords include at least one of the following:

- Lower case letter
- Upper case letter
- Number
- Special character (such as * or #)
- Minimum length of 8 characters (required in addition to any one of the above)

Other updates

- Accounts Payable now supports 1099 tax reporting requirements for tax year 2021.
- Email documents can now be sent using Microsoft 365.
- Test emails can now be sent using Microsoft Outlook. *(For Sage 300 only)*



What's new in 2022.1

Released November 2021

Project and Job Costing integration with AP Invoice

While creating an AP invoice, users can now use the new checkbox to make the invoice job-related. This option would change the grid from regular fields to job-related fields (Contracts, Project, Resource, etc.) that will ensure that once the invoice is created, the corresponding Project and Job Costing module is updated automatically.

UX improvements for Web screens

- New 'navigation' buttons on key fields that can be used to move to the first/previous/next/last records.
 - Record navigation - Record controls allow moving forward and backward one record at a time or through several records as in the desktop UI.
- Sign-on page significantly improved to be more consistent with the other Sage solutions:
 - Sign In button will be disabled while the company details get loaded
 - Spinner indicator will indicate slow network
 - Improved messaging for errors and password changes

Improved Process for Printing Custom Crystal Reports

The new printing process for web screens that was released with the Sage 300 2021 version is now extended to custom crystal reports that would result in less server crashes and improve overall performance during printing custom reports.

When printing a report, a preview of the report will no longer be displayed in the SAP Crystal Reports® viewer. Instead, the Export Report screen appears and provides options for saving the report to a file. To print a physical copy of the report, users will now have just save it to a PDF and print.

Web API improvements

Provide better error messaging so developers have a better understanding of what the error is. This would improve satisfaction of developers creating customizations and extensions with our ISV community.

Finder support for 64-bit Financial Reporter

Finders in Financial Reporter now work when using Microsoft Excel 64-bit.

US and Canadian Payroll

Users now experience improved speed of processing payroll with reduced cumbersome work arounds.

US Payroll and Canadian Payroll enhancement:

- System can now auto-populate Canadian income tax (Provincial and Federal), US Federal and State tax.
- Users can assign a default payroll frequency which is automatically selected in 'Calculate Payroll' screen.
- Users can add a 'Print' button to the 'Calculate Payroll' screen that will print the pre-check register reducing additional steps.
- Users can add multiple/historical comments on the employee record, similar to comments that exist for AP vendors and AR customers.

Canadian Payroll enhancements:

- System now supports multiple 'T4A – Other information' boxes (028,104, 105 and 130) for T4A filing including electronic filing.
- Ability to generate web ROE file for more than 99 employees (was previously limited to only 99 employees).
- System now defaults province of employment to bank - Previously Alberta was the default province which caused issues for T4 reporting on incorrect province of employment.

What's new in 2022.0

Released August 2021

New Web Screens

We have added several new web screens for Sage 300 subscription customers to increase the utility of web screens on our quest to achieve feature parity with desktop screens.

- **General Ledger:** GL Chart of Accounts
- **Accounts Receivable:** AR Customer List
- **Project and Job Costing:** Transaction Screens for Opening Balance, Costs, Material Usage, Material Returns, Material Allocation, Post Transactions and Print Transaction Listing
- **Common Services:** Reminder List

Redesigned Finder to Align with Desktop Functionality

The new Finder has usability improvements and the addition of persistent filtering that would help users set default search options.

Filtering option now is set to 'Show all records' so users can view previous and next records by default. Additional filtering options, now make highlighting first and last record easier.

General Ledger Financial Reporter now compatible with either 32 or 64-Bit Microsoft Excel

The 64-bit Financial Reporter provides improved compatibility with several business software solutions.

Users can now seamlessly use General Ledger Financial Reporter with either 32 or 64-Bit Microsoft Excel.

Purchase Order Improvements

Users can mass update the Location or Arrival Date in Purchase Order detail lines as well as enter negative additional costs on purchase order credit notes.

Order Entry Improvements

Users can mass update the Location or Expected Ship Date in Order detail lines.

Reserve LanPak User Licenses

Users can now reserve one or several LanPak user licenses for a user or any 3rd party product. LanPak license provides specific users uninterrupted access to Sage 300.

Bank Feeds Improvement

With the improvements to Bank Feeds on the Reconcile E-Statements screen, users now have additional ways to reconcile bank transactions.

Transactions downloaded using a bank feed will now have a Bank Cleared Date based on the local time.

Accessing Sage Data & Analytics

There are now new options to access Sage Data & Analytics from within Sage 300.

In desktop screens, it can be accessed by clicking on Sage Data & Analytics icon on the desktop ribbon. In web screens, it can be opened from Business Intelligence Reporting on the navigation menu.

Enhanced 3rd Party Help

3rd party applications can link and drop their content in the Sage 300 help menu that enables users to find the information and resources needed to use these 3rd party applications with Sage 300.

For more information on Sage 300 2022.2 and how to upgrade, please contact your Sage business partner. For more details on this release and documentation, please visit [Sage 300 2022 Release Notes](#).